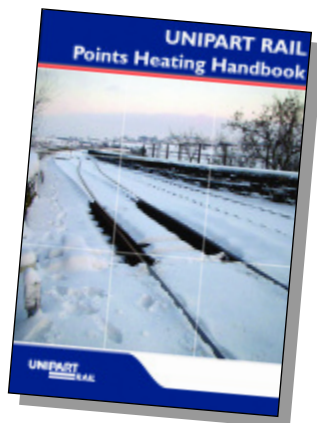


Unipart Rail prepares for winter and launches a point heating handbook

The climatic variances of the UK winter (and in particular the effect this can have on the smooth operation of the rail network) make it essential that systems are in place to ensure that ice and snow do not disrupt the movement of the point switches that are critical to train movements. The UK rail network is therefore being progressively fitted or updated with the latest developments in point heating and Unipart Rail is well positioned to support this initiative.

Expanded portfolio and kitting options

Unipart Rail has now expanded its range of related products and offers a 'one-stop shop' option for all those items required to carry out a complete point heating installation or planned maintenance. To further assist customers, kits of parts have been introduced so complete packages of equipment can arrive on-site ready for installation. This has the added bonus of simplifying the ordering process for customers.



New point heating handbook

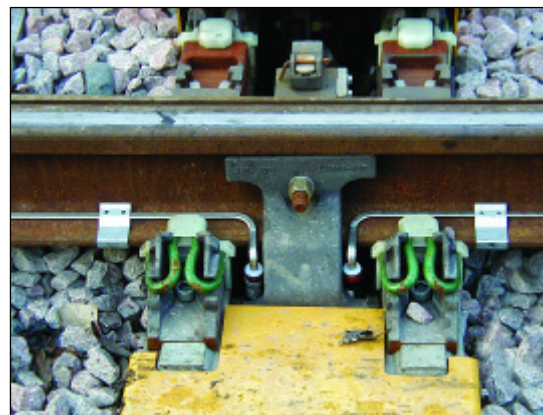
The new Unipart Rail point heating handbook is now available and offers at a glance listings of every component used in fitting point layouts -



including the option of selecting a kit of parts for any particular length of switch or type of rail. The handbook also provides both options of self-regulating or constant wattage installations.

The service available also guarantees that all available components are from current, approved sources of manufacture. Customers requiring their own particular parts for their specific project needs can also have bespoke kits provided.

Bruce Birkett, Infrastructure Engineer and Project Manager, Carillion Rail, commented: 'The point heating service consists of all the items needed for a complete site installation. Unipart Rail has reduced the complexity of the supply chain and made our work much simpler. The information booklet provides an easy reference for all point heating materials while the additional service of 'package supply' reduces the risk of materials being unavailable at critical installation times.'



Improved electrification/overhead line equipment material supply

Unipart Rail is extending its support and services to customers in respect of both overhead line equipment and third rail electrification. A project team was set up at the start of 2009 involving customers and manufacturers/suppliers to progressively expand the range of products and services available. A comprehensive database of electrification part numbers and cross matches between Network Rail PADS catalogue numbers, OLME part numbers and assembly drawings, has been built upon and allows customers to be supported by speedy and detailed pricing and availability data, either by spreadsheet or traditional quotation methods.

Improved stockholdings

Project team discussions with customers have already led to the significant growth of the product range, along with investment in the stockholding of the electrification range of materials, to specifically ensure key materials are available whenever required.

Just in time deliveries

Further development has seen the introduction of 'work packages' where materials for specific sites are packaged together and delivered as a complete inventory of materials for the individual area of work. This aids customers through single drop deliveries of all materials at pre-agreed dates and times that minimise local storage and lessens the risk of losses at site. Unipart Rail understands that space on-site can be limited

and the package option can be significant in best usage of this space. The electrification project team is made up of procurement experts, technical support, commercial manager and stock controllers. Further development of the support and services continues.

