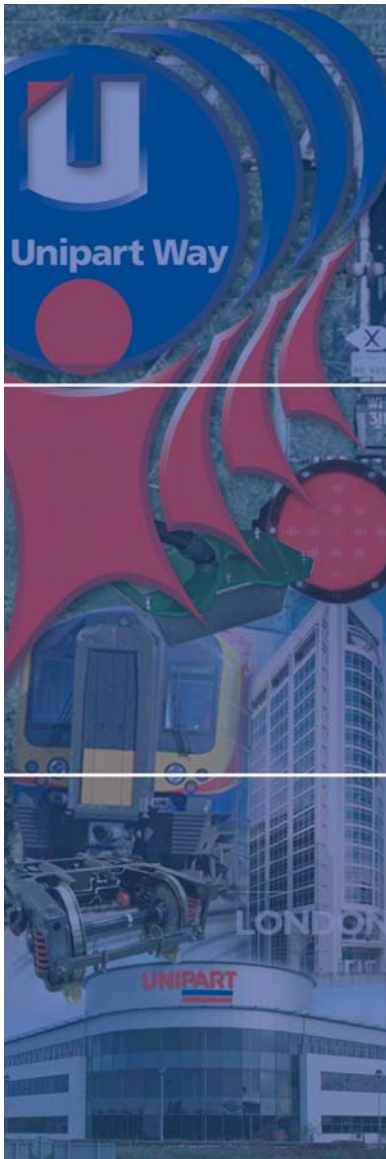


LED/Battery Ground Signal Lamp

A direct replacement for existing paraffin lamps
in Disc Shunt Signals



- Direct replacement for the existing paraffin lamp (ground signal)
- Quick and easy installation
- Uses highly reliable LED and battery technology
- Recommended battery change every six months
- No need for daily lighting visit
- Designed and built by Unipart Rail York Product Development Team
- Provided with or without alarm facility
- Can be produced to fit most housing units
- Direct replacement for Cat N° 0020/053140

Also in development is an LED unit for Semaphore Signals

Contact for technical advice

Telephone :+44 (0) 1270 847708

Facsimile :+44 (0) 1270 847721

e-mail: technicalsupport@unipartrail.com

Catalogue Numbers -

Shunt Signal LED Unit: 0086/009299

Battery Pack: 0086/009300

Railtrack Acceptance Certificate PA05 00698

Semaphore Signal LED Unit 0086/009194

Available from:

Unipart Rail, Gresty Road, Crewe, Cheshire, CW2 6EH, UK

T +44 (0) 1270 847 600 **F** +44 (0) 1270 847601