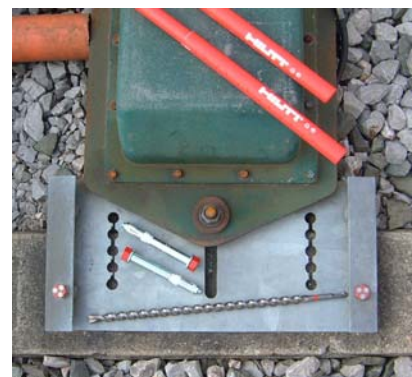


# Hilti AWS fastening system for concrete sleepers

## HSLB M12 x 50 heavy duty anchor for fastening AWS magnets to concrete sleepers

- Used specifically for anchoring AWS magnets to concrete sleepers
- Plastic collapsible section prevents anchor turning in hole
- Pre-set torque bolt head shears off when correct torque is reached, revealing secondary head for easy removal at a later date if required
- Use with Hilti 18 mm SDS drill-bit 39/001020
- Use with template to accurately site holes avoiding rebar
- Use is specified in Network Rail Group Standard GS/IH 2U 05 Issue 2



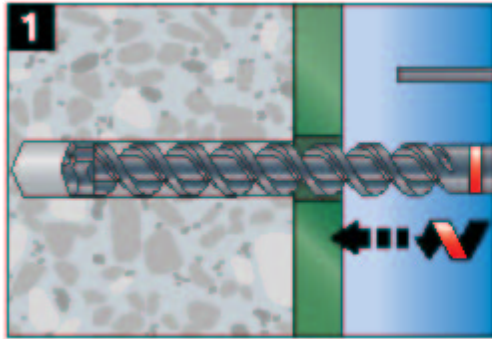
### Contact for technical advice

Telephone: +44 (0) 1270 847708

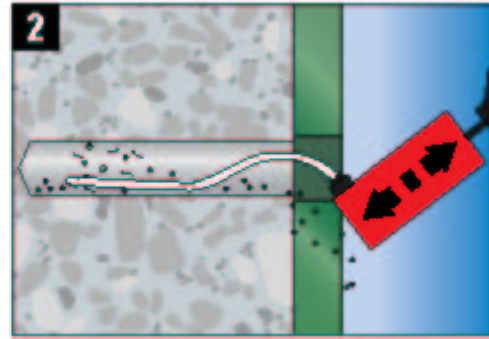
Facsimile: +44 (0) 1270 847721

e-mail: [technicalsupport@unipartrail.com](mailto:technicalsupport@unipartrail.com)

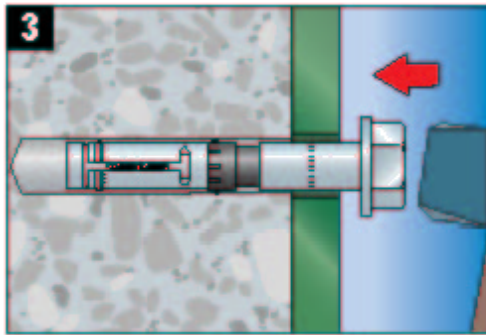




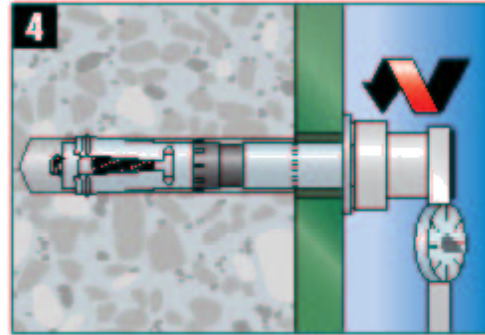
Drill hole



Blow out dust and fragments



Install anchor



Apply tightening torque until  
bolt head shears off  
(for HSL-3-B no torque  
wrench is needed)

### Catalogue Numbers

Hilti expanding anchor	0003/033550
Hilti drill bit (18mm x 470mm)	0039/001020
Template	0062/008000

Available from:

**Unipart Rail**, Gresty Road, Crewe, Cheshire, CW2 6EH, UK

**T** +44 (0) 1270 847 600 **F** +44 (0) 1270 847601