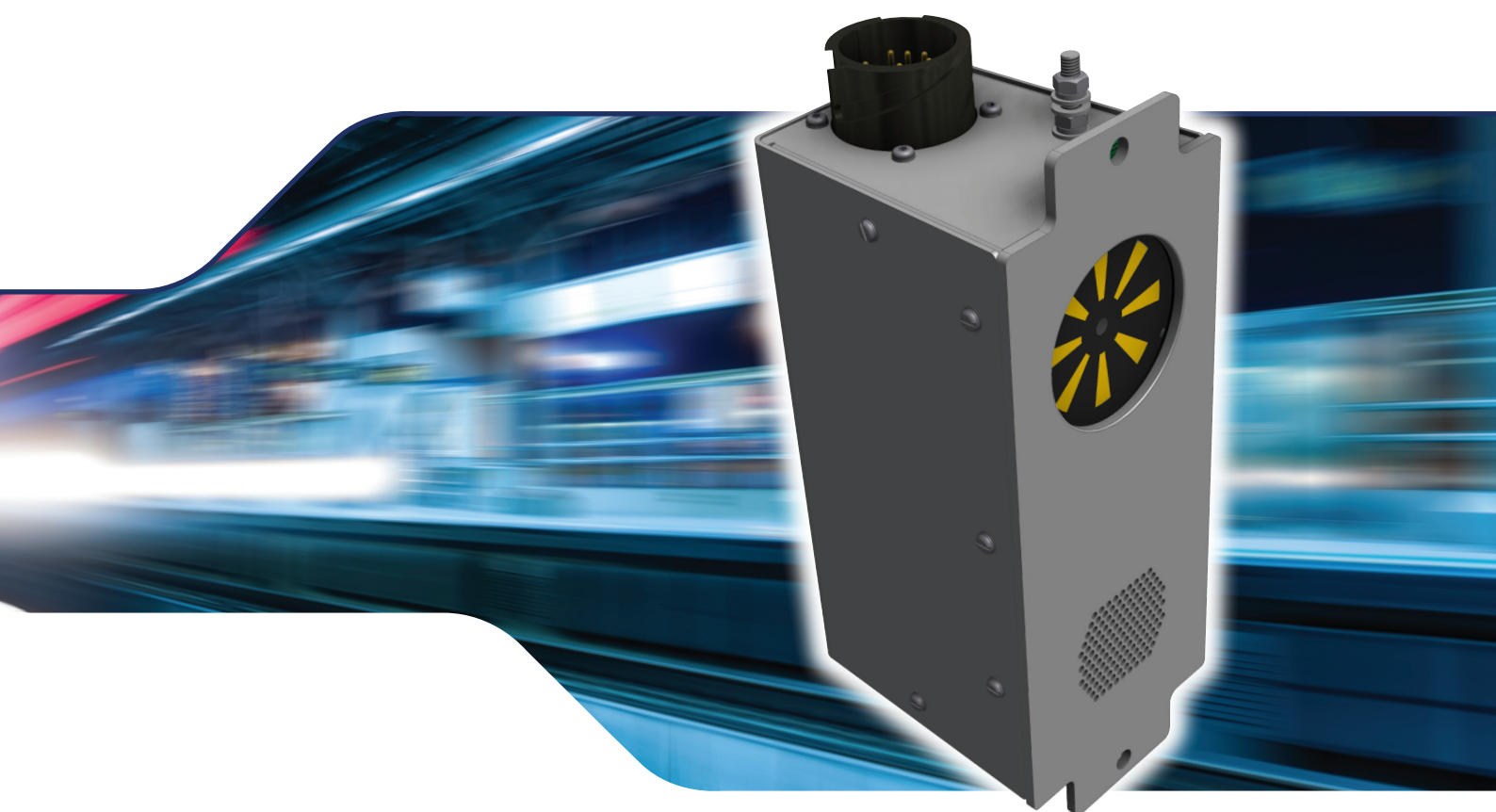


AWS LED Alarm & Indicator

by Unipart Rail



Functional Description

The LED Alarm and Indicator Unit forms an integral part of the Automatic Warning Sub-System fitted to traction and rolling stock driving vehicles. The purpose of the alarm and indicator unit within the AWS system is to provide various in-cab indications, to gain the attention of drivers of the approach of features that are likely to require a reduction in speed. The indicator circuitry includes a two state bistable device and indicator proving circuitry.

AWS LED Alarm & Indicator Unit Industry Standards	
Description	Standard
Specification for AWS Alarm & Indicator Unit	TEE/E/81/R/39
Vehicle Fire, Safety and Evacuation.	GM/RT2130
Equipotential Bonding of Rail Vehicles to Running Rail Potential.	GM/RT2304
Recommendations for Equipotential Bonding of Rail Vehicles to Running Rail Potential.	GM/RC2514
Electromagnetic Compatibility between Railway Infrastructure and Trains.	GE/RT8015
Requirements for Driving Cabs of Railway Vehicles	GM/RT2161

AWS LED Alarm & Indicator	
Requirements	Standard
Environmental Type Testing	Railway Applications – Electronic Equipment Used on Rolling Stock BS EN 50155
EMC Type Testing	Railway Applications – Electromagnetic Compatibility BS EN 50121-3-2
Low Voltage Directive	Exempt due to the unit working below the minimum 75v (input 12V)
Availability	Railway Group Standard GE/RT8075
Maintenance	The AWS LED A&I Unit does not require specific maintenance in excess of the regular AWS testing.
Calibration	There are no calibration requirements for the A&I unit, calibration shall be done during the production process.
Decommissioning & Disposal	When removed from the vehicles the A&I unit should either be returned to Unipart for re-service or disposed of in accordance with local and national regulations.

AWS Alarm & Indicator Connector Options	
Catalogue Number	Nominal Sound Pressure Level In Factory Testing
0062/015786	83dBA +/-2dBA
With Angel Plate	
0062/016007	82dBA +/-2dBA
With 310mm Flying lead and front panel	
0062/015738	84dBA +/-2dBA
Rear mounted with nut inserts (alternative fixing method)	
0062/015809	85dBA +/-2dBA
With flying lead out of lid and female mil connector	
0062/006602	85dBA +/-2dBA
*Note catalogue numbers used are an example, there are a wider range of DB levels available.	

Unipart Rail

Gresty Road, Crewe,
Cheshire CW2 6EH

Tel: +44 (0)1270 847 600

email: enquiries@uniparttrail.com



Visit www.uniparttrail.com for details
of our Worldwide Regional Offices