



Self-Testing Current Rail Indicator Device

Enhanced worker safety in third and fourth rail areas



Protecting
Rail Workers



Tube Lines

Fully approved for use on Network Rail
and Tube Lines infrastructure.

Approved for use on London
Underground

Now approved for use on
Network Rail Infrastructure

Certificate PA05/06069



SERVING THE WORLD'S RAILWAYS



The Self-Testing Current Rail Indicator Device (ST-CRID)

is a portable traction voltage indicating device for use in fourth and third rail areas.

ST-CRID provides a visual warning of the presence of traction voltage between the conductor rail and the traction return rail. It is also capable of detecting and indicating the presence of other unsafe voltages within the parameters below on a given section of track.

Product features

- Unique battery powered off-line self-test facility to prove the integrity of the unit
- Flashing high brightness LED displays for a consistent reliable and intense visual warning
- Magnetic coupling to the rails gives a secure fixing to most rail types
- Defined minimum detection voltage (avoids problems with induced voltages)
- Dual redundancy for reliable operation



Self test connection

The ST-CRID is just one of the many products innovated and manufactured by Unipart Rail's Innovation Team.

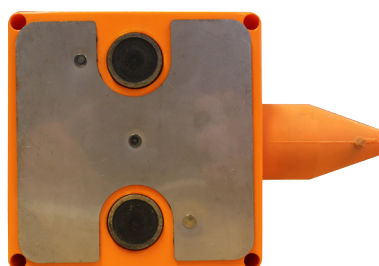
Our service ensures that all products are tailored to each customer's specific requirements, as well as a complete aftermarket system for on-going maintenance and calibration.

To order:

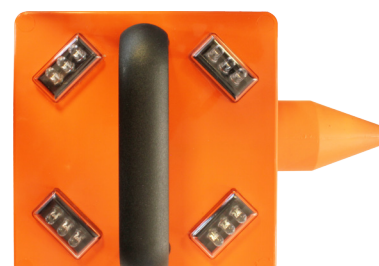
Tube Lines: 0040/017960
Network Rail: 0054/213040



Self-test button and battery status indicator



Austenitic Stainless Steel Connection Plate



LED Indicator Clusters

Unipart Rail (Infrastructure)

Gresty Road, Crewe,
Cheshire CW2 6EH

Tel: +44 (0)1270 847 600

Fax: +44 (0)1270 847 601

email: technicalsupport@unipartrail.com

www.unipartrail.com

UNIPART
RAIL

Visit www.unipartrail.com for details
of our Worldwide Regional Offices