



TrackPan

by Unipart Rail

Designed and engineered to protect the environment from contamination caused by spillage and leaks on the rail network



- Lower cost alternative to traditional solutions
- Quick and simple installation
- No disturbance to existing track
- Captures spillages and leaks
- Avoids ballast cleaning costs
- Available in standard and bespoke configurations

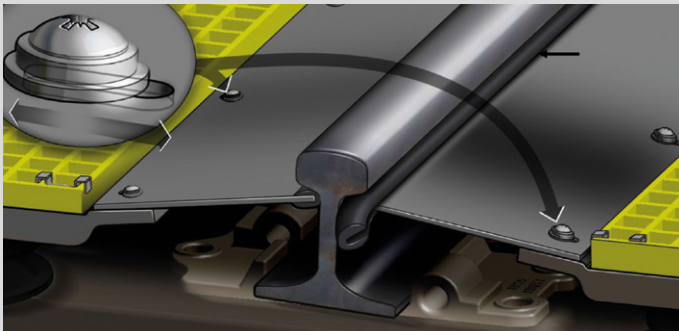
UNIPART
RAIL

SERVING THE WORLD'S RAILWAYS

The Unipart Rail TrackPan system is designed and engineered to protect the environment from contamination caused by spillage and leaks on the rail network. Compared with traditional steel and concrete applications TrackPan provides an inexpensive and flexible alternative.

Reasons to choose TrackPan

- Excellent protection from spills and contamination
- Economical alternative compared to traditional solutions
- No disturbance to track during installation
- Durable, low maintenance construction
- Easy to install
- Full engineering on-site support
- Connects to the drainage system, removing the need for pumping and manual drainage
- Reduced risk of slipping due to installation of grating walkway
- One section of TrackPan covers 10m of rail track
- Reduces the risk of costly clean-up and regulatory fines
- Road to be protected by TrackPan can be re-opened overnight during installation to allow vehicle movements



Adjustable design allows for different international track gauges.

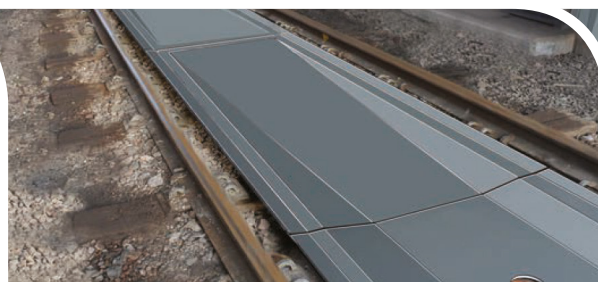


The carefully designed cross section of the slope and collector panels provides drainage for fluids, as well as a stable, cost effective platform for walking over rails in the depot area, avoiding the risk of slips and falls walking over greasy sleepers or loose ballast.

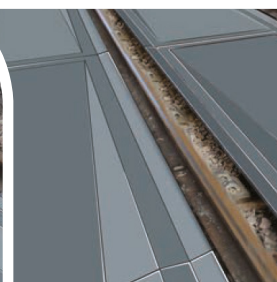
Fitted in five simple steps:



1. Attach pedestals to the sleepers



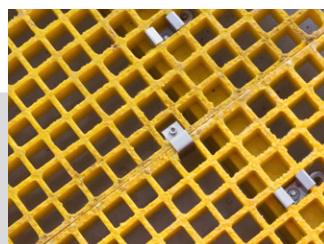
2. Sit centre panel on top of pedestals



3. Fit additional ce

Unipart Rail TrackPan system cleans up!

Not only can spills in railway facilities cause enormous harm to the environment, they can also pose long-term health hazards and possible damage to the railway infrastructure. In addition to the effects of spill and contamination the costs and reputational damage caused by such spills can be very expensive and in some cases irrecoverable.



Even when care and attention is taken, spills can still occur. This coupled with general leakage from rolling stock can be very difficult to resolve.

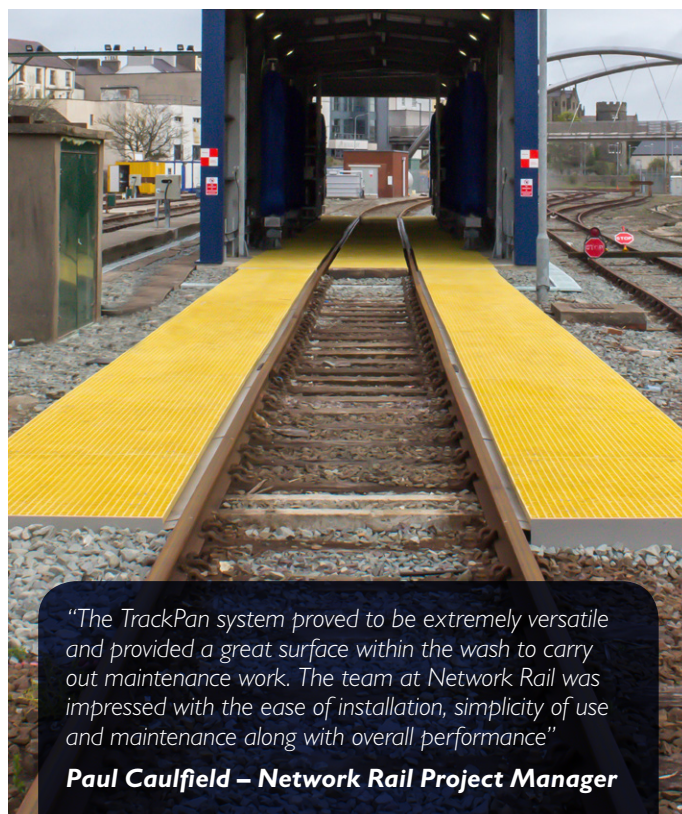
The TrackPan system manufactured by Unipart Rail is considered the best available technology offering protection from spills by collecting fluids and substances and then transferring them to a proper waste treatment system.

Adaptable Modular System

All assembly hardware is supplied. The pans simply bolt down to the existing railway sleepers. It can be put into service within hours of delivery and if necessary can be relocated to another location if depot operations change. Each unit is manufactured to provide the maximum self-containing capacity whilst adhering to railway clearance standards.

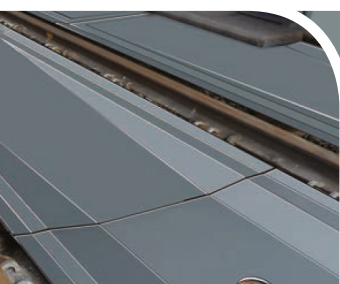
The modular system allows additional sections to be added or reconfigured. If a section becomes damaged its construction means that only the damaged sections need to be replaced.

Installations on descending gradients are easily undertaken due to the easy to adjust mounting feet design. Installations around curves are also not a problem with all pan sections fitting simply around all possible track curvatures with very little modification. No impact to rail joints and quick access to the ballast and infrastructure beneath enables on track inspection procedures.

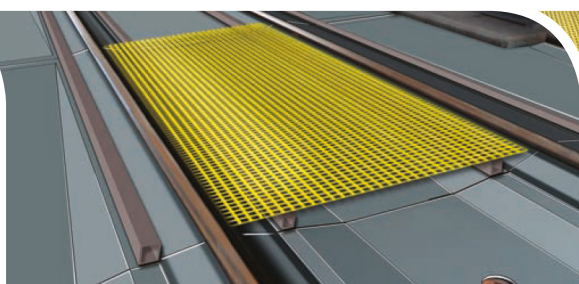


"The TrackPan system proved to be extremely versatile and provided a great surface within the wash to carry out maintenance work. The team at Network Rail was impressed with the ease of installation, simplicity of use and maintenance along with overall performance"

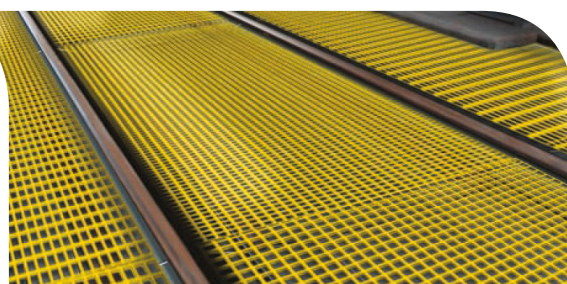
Paul Caulfield – Network Rail Project Manager



ntre or side panels



4. Fit support bars for walkway



5. Fit walkways to suit custom fit

About Unipart

The Unipart Group is a leading UK manufacturer, full service logistics provider and consultant in operational excellence. Operating across a range of market sectors, including automotive, manufacturing, mobile telecoms, rail, retail and technology, Unipart offers a breadth of services to a wide range of blue chip clients internationally.

Unipart Rail (Traction and Rolling Stock)

Jupiter Building, First Point, Balby Carr Bank,
Doncaster DN4 5JQ

Tel: +44 (0) 1302 731400

Fax: +44 (0) 1302 731401

email: trsenquiries@unipartrail.co.uk



Visit www.unipartrail.com for details
of our Worldwide Regional Offices