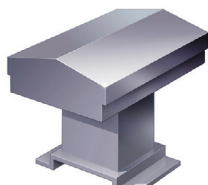


## POINTS HEATING **Power Transformers & Bases**

### Galvanised Enclosures - AC Secondaries (for non third rail areas)

| Catalogue Number | Description                            | Part No                        |
|------------------|--|--------------------------------|
| 0055/121369      | Transformer - For Strip Heaters, 5KVA  | PHT/5/SH/PJ/DUAL/AC/IP23/GALV  |
| 0055/121370      | Transformer - For Strip Heaters, 10KVA | PHT/10/SH/PJ/DUAL/AC/IP23/GALV |



### Stainless Steel 316L Enclosures - DC Secondaries (for use in third rail areas)

| Catalogue Number | Description  | Part No                                |
|------------------|--|--|
| 0055/121363      | Transformer Rectifier - 10KVA, 230V, Single Phase, Primary | PHT/10/SH/PJ/                          |
| 0055/121364      | Transformer Rectifier - 230V, 5KVA, Single Phase, Primary  | PHT/5/SH/PJ/                           |
| 0055/121365      | Transformer Rectifier - 5KVA, 400V, Single Phase, Primary  | PHT/5/SH/PJ/DUAL/DC/IP23/316L/400V     |
| 0055/121366      | Transformer Rectifier - 10KVA, 400V, 3 Phase, Primary      | PHT/10/SH/PJ/DUAL/110VDC/IP23/3PH/400V |



### Mounting Bases & Accessories

| Catalogue Number | Description  |
|------------------|--|
| 0004/012774      | Reinforced Concrete 6-Way Point Rod Roller Block for Mounting Power Pack       |
| 0004/012777      | Transformer Concrete Mounting Base ("H" Style) for Points Heating Transformers |
| 0050/555746      | Kit of Nuts, Bolts and Washers for Fastening Mounting Post To Concrete Base    |

## HEATER STRIPS - STANDARD NON-INSULATED

### SAN Product Configuration for 110v Constant Wattage Strip Heaters

| Cat No                | SAN Part No | Watts Rating/m | Strip Length/m | Lead length/m | Plug Fitted |
|-----------------------|-------------|----------------|----------------|---------------|-------------|
| <b>100W</b>           |             |                |                |               |             |
| 0055/020033           | BR500       | 100W           | 0.5m           | 1.5m          | Rubber Plug |
| <b>100W, 4m strip</b> |             |                |                |               |             |
| 0055/008023           | BR4001      | 100W           | 4m             | 1.5m          | Rubber Plug |
| 0055/163200           | BR4001/10m  | 100W           | 4m             | 10m           | No Plug     |
| 0055/163201           | BR4001/15m  | 100W           | 4m             | 15m           | No Plug     |
| 0055/163202           | BR4001/20m  | 100W           | 4m             | 20m           | No Plug     |
| 0055/163203           | BR4001/30m  | 100W           | 4m             | 30m           | No Plug     |
| <b>100W, 5m strip</b> |             |                |                |               |             |
| 0055/008024           | BR5001      | 100W           | 5m             | 1.5m          | Rubber Plug |
| 0055/163204           | BR5001/10m  | 100W           | 5m             | 10m           | No Plug     |
| 0055/163205           | BR5001/15m  | 100W           | 5m             | 15m           | No Plug     |
| 0055/163206           | BR5001/20m  | 100W           | 5m             | 20m           | No Plug     |
| 0055/163207           | BR5001/30m  | 100W           | 5m             | 30m           | No Plug     |
| <b>100W, 6m strip</b> |             |                |                |               |             |
| 0055/008039           | BR6001      | 100W           | 6m             | 1.5m          | Rubber Plug |
| 0055/163208           | BR6001/10m  | 100W           | 6m             | 10m           | No Plug     |
| 0055/163209           | BR6001/15m  | 100W           | 6m             | 15m           | No Plug     |
| 0055/163210           | BR6001/20m  | 100W           | 6m             | 20m           | No Plug     |
| 0055/163211           | BR6001/30m  | 100W           | 6m             | 30m           | No Plug     |
| <b>150W</b>           |             |                |                |               |             |
| 0055/020013           | BR600       | 150W Fixed     | 0.6m           | 1.5m          | Rubber Plug |
| 0055/020100           | BR600/NRS   | 150W Fixed     | 0.6m           | 3m            | No Plug     |
| <b>150W, 3m strip</b> |             |                |                |               |             |
| 0055/163355           | BR3015/10m  | 150W           | 3m             | 10m           | No Plug     |
| 0055/163356           | BR3015/15m  | 150W           | 3m             | 15m           | No Plug     |
| 0055/163357           | BR3015/20m  | 150W           | 3m             | 20m           | No Plug     |
| 0055/163358           | BR3015/30m  | 150W           | 3m             | 30m           | No Plug     |
| <b>150W, 4m strip</b> |             |                |                |               |             |
| 0055/163238           | BR4015/10m  | 150W           | 4m             | 10m           | No Plug     |
| 0055/163212           | BR4015/15m  | 150W           | 4m             | 15m           | No Plug     |
| 0055/163213           | BR4015/20m  | 150W           | 4m             | 20m           | No Plug     |
| 0055/163214           | BR4015/30m  | 150W           | 4m             | 30m           | No Plug     |
| <b>150W, 5m strip</b> |             |                |                |               |             |
| 0055/163215           | BR5015/10m  | 150W           | 5m             | 10m           | No Plug     |
| 0055/163216           | BR5015/15m  | 150W           | 5m             | 15m           | No Plug     |
| 0055/163217           | BR5015/20m  | 150W           | 5m             | 20m           | No Plug     |
| 0055/163218           | BR5015/30m  | 150W           | 5m             | 30m           | No Plug     |
| <b>160W, 6m strip</b> |             |                |                |               |             |
| 0055/163219           | BR6015/10m  | 150W           | 6m             | 10m           | No Plug     |
| 0055/163220           | BR6015/15m  | 150W           | 6m             | 15m           | No Plug     |
| 0055/163221           | BR6015/20m  | 150W           | 6m             | 20m           | No Plug     |
| 0055/163222           | BR6015/30m  | 150W           | 6m             | 30m           | No Plug     |
| <b>200W</b>           |             |                |                |               |             |
| 0055/021430           | BR1002      | 200W           | 1m             | 1.5m          | Rubber Plug |
| 0055/020034           | BR2000      | 200W           | 2m             | 1.5m          | Rubber Plug |
| <b>200W, 3m strip</b> |             |                |                |               |             |
| 0055/008033           | BR3000      | 200W           | 3m             | 1.5m          | Rubber Plug |
| 0055/163359           | BR3000/10m  | 200W           | 3m             | 10m           | No Plug     |
| 0055/163360           | BR3000/15m  | 200W           | 3m             | 15m           | No Plug     |
| 0055/163361           | BR3000/20m  | 200W           | 3m             | 20m           | No Plug     |
| 0055/163362           | BR3000/30m  | 200W           | 3m             | 30m           | No Plug     |

## HEATER STRIPS - STANDARD NON-INSULATED

### SAN Product Configuration for 110v Constant Wattage Strip Heaters continued

| Cat No                | SAN Part No     | Watts Rating/m | Strip Length/m | Lead length/m | Plug Fitted |
|-----------------------|-----------------|----------------|----------------|---------------|-------------|
| <b>200W, 4m strip</b> |                 |                |                |               |             |
| 0055/008012           | BR4000          | 200W           | 4m             | 1.5m          | Rubber Plug |
| 0055/020035           | BR4000/2m       | 200W           | 4m             | 2m            | Rubber Plug |
| 0055/020101           | BR4000/NRS      | 200W           | 4m             | 3m            | No Plug     |
| 0055/020038           | BR4000/10m Plug | 200W           | 4m             | 10m           | Rubber Plug |
| 0055/020130           | BR4000/10m      | 200W           | 4m             | 10m           | No Plug     |
| 0055/020131           | BR4000/15m      | 200W           | 4m             | 15m           | No Plug     |
| 0055/020132           | BR4000/20m      | 200W           | 4m             | 20m           | No Plug     |
| 0055/020133           | BR4000/30m      | 200W           | 4m             | 30m           | No Plug     |
| <b>200W, 5m strip</b> |                 |                |                |               |             |
| 0055/008013           | BR5000          | 200W           | 5m             | 1.5m          | Rubber Plug |
| 0055/020036           | BR5000/2m       | 200W           | 5m             | 2m            | Rubber Plug |
| 0055/020102           | BR5000/NRS      | 200W           | 5m             | 3m            | No Plug     |
| 0055/020039           | BR5000/10m Plug | 200W           | 5m             | 10m           | Rubber Plug |
| 0055/020134           | BR5000/10m      | 200W           | 5m             | 10m           | No Plug     |
| 0055/020135           | BR5000/15m      | 200W           | 5m             | 15m           | No Plug     |
| 0055/020136           | BR5000/20m      | 200W           | 5m             | 20m           | No Plug     |
| 0055/020137           | BR5000/30m      | 200W           | 5m             | 30m           | No Plug     |
| <b>200W, 6m strip</b> |                 |                |                |               |             |
| 0055/008014           | BR6000          | 200W           | 6m             | 1.5m          | Rubber Plug |
| 0055/020037           | BR6000/2m       | 200W           | 6m             | 2m            | Rubber Plug |
| 0055/020103           | BR6000/NRS      | 200W           | 6m             | 3m            | No Plug     |
| 0055/020040           | BR6000/10m Plug | 200W           | 6m             | 10m           | Rubber Plug |
| 0055/020138           | BR6000/10m      | 200W           | 6m             | 10m           | No Plug     |
| 0055/020139           | BR6000/15m      | 200W           | 6m             | 15m           | No Plug     |
| 0055/020140           | BR6000/20m      | 200W           | 6m             | 20m           | No Plug     |
| 0055/020141           | BR6000/30m      | 200W           | 6m             | 30m           | No Plug     |
| <b>300W</b>           |                 |                |                |               |             |
| 0055/008032           | BR4003          | 300W           | 4m             | 1.5m          | Rubber Plug |
| 0055/008026           | BR5003          | 300W           | 5m             | 1.5m          | Rubber Plug |
| 0055/008027           | BR6003          | 300W           | 6m             | 1.5m          | Rubber Plug |



Standard Non-Insulated Heater Strip without Plug



Standard Non-Insulated Heater Strip with Plug

## HEATER STRIPS - INSULATED

### SAN Insulated 110v Constant Wattage Strips (for use in 3rd rail areas only)

| Cat No                | SAN Part No    | Watts Rating/m | Strip Length/m | Lead length/m | Plug Fitted |
|-----------------------|----------------|----------------|----------------|---------------|-------------|
| <b>100W</b>           |                |                |                |               |             |
| 0055/163375           | BR5001 INS     | 100W           | 5m             | 1.5m          | Rubber Plug |
| <b>150W</b>           |                |                |                |               |             |
| 0055/020017           | BR1 INS        | 150W Fixed     | 1m             | 1.5m          | Rubber Plug |
| 0055/163363           | BR3015 INS/10m | 150W           | 3m             | 10m           | No Plug     |
| 0055/163364           | BR3015 INS/15m | 150W           | 3m             | 15m           | No Plug     |
| 0055/163365           | BR3015 INS/20m | 150W           | 3m             | 20m           | No Plug     |
| 0055/163366           | BR3015 INS/30m | 150W           | 3m             | 30m           | No Plug     |
| <b>200W</b>           |                |                |                |               |             |
| 0055/020104           | BR1002 INS/3m  | 200W           | 1m             | 3m            | No Plug     |
| 0055/020041           | BR2 INS        | 200W           | 2m             | 1.5m          | Rubber Plug |
| <b>200W, 3m strip</b> |                |                |                |               |             |
| 0055/020042           | BR3 INS        | 200W           | 3m             | 1.5m          | Rubber Plug |
| 0055/163367           | BR3 INS/10m    | 200W           | 3m             | 10m           | No Plug     |
| 0055/163368           | BR3 INS/15m    | 200W           | 3m             | 15m           | No Plug     |
| 0055/163369           | BR3 INS/20m    | 200W           | 3m             | 20m           | No Plug     |
| 0055/163370           | BR3 INS/30m    | 200W           | 3m             | 30m           | No Plug     |
| <b>200W, 4m strip</b> |                |                |                |               |             |
| 0055/020018           | BR4 INS        | 200W           | 4m             | 1.5m          | Rubber Plug |
| 0055/020105           | BR4 INS/NRS    | 200W           | 4m             | 3m            | No Plug     |
| 0055/020145           | BR4 INS/10m    | 200W           | 4m             | 10m           | No Plug     |
| 0055/020146           | BR4 INS/15m    | 200W           | 4m             | 15m           | No Plug     |
| 0055/020147           | BR4 INS/20m    | 200W           | 4m             | 20m           | No Plug     |
| 0055/020111           | BR4 INS/25m    | 200W           | 4m             | 25m           | No Plug     |
| 0055/020148           | BR4 INS/30m    | 200W           | 4m             | 30m           | No Plug     |
| <b>200W, 5m strip</b> |                |                |                |               |             |
| 0055/020019           | BR5 INS        | 200W           | 5m             | 1.5m          | Rubber Plug |
| 0055/020106           | BR5 INS/NRS    | 200W           | 5m             | 3m            | No Plug     |
| 0055/020149           | BR5 INS/10m    | 200W           | 5m             | 10m           | No Plug     |
| 0055/020150           | BR5 INS/15m    | 200W           | 5m             | 15m           | No Plug     |
| 0055/020151           | BR5 INS/20m    | 200W           | 5m             | 20m           | No Plug     |
| 0055/020152           | BR5 INS/30m    | 200W           | 5m             | 30m           | No Plug     |
| <b>200W, 6m strip</b> |                |                |                |               |             |
| 0055/020020           | BR6 INS        | 200W           | 6m             | 1.5m          | Rubber Plug |
| 0055/020107           | BR6 INS/NRS    | 200W           | 6m             | 3m            | No Plug     |
| 0055/020153           | BR6 INS/10m    | 200W           | 6m             | 10m           | No Plug     |
| 0055/020154           | BR6 INS/15m    | 200W           | 6m             | 15m           | No Plug     |
| 0055/020155           | BR6 INS/20m    | 200W           | 6m             | 20m           | No Plug     |
| 0055/020156           | BR6 INS/30m    | 200W           | 6m             | 30m           | No Plug     |



Insulated Heater Strip without Plug

## HEATER STRIPS - 90° BEND NON-INSULATED

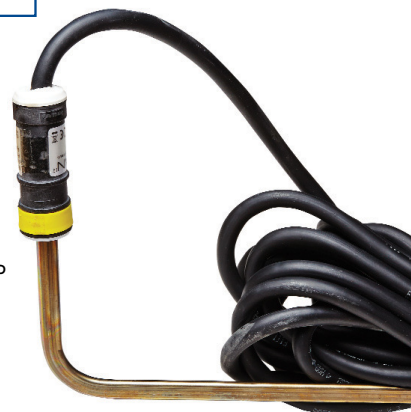
### SAN 110v Constant Wattage Point Heater Strips with 90° bend

| Cat No                | SAN Part No     | Watts Rating/m | Strip Length/m | Lead length/m | Plug Fitted |
|-----------------------|-----------------|----------------|----------------|---------------|-------------|
| <b>150W, 3m strip</b> |                 |                |                |               |             |
| 0055/163310           | BR3015/90dg/10m | 150W           | 3m             | 10m           | No Plug     |
| 0055/163311           | BR3015/90dg/15m | 150W           | 3m             | 15m           | No Plug     |
| 0055/163312           | BR3015/90dg/20m | 150W           | 3m             | 20m           | No Plug     |
| <b>150W, 4m strip</b> |                 |                |                |               |             |
| 0055/163313           | BR4015/90dg/10m | 150W           | 4m             | 10m           | No Plug     |
| 0055/163314           | BR4015/90dg/15m | 150W           | 4m             | 15m           | No Plug     |
| 0055/163315           | BR4015/90dg/20m | 150W           | 4m             | 20m           | No Plug     |
| <b>150W, 5m strip</b> |                 |                |                |               |             |
| 0055/163316           | BR5015/90dg/10m | 150W           | 5m             | 10m           | No Plug     |
| 0055/163317           | BR5015/90dg/15m | 150W           | 5m             | 15m           | No Plug     |
| 0055/163318           | BR5015/90dg/20m | 150W           | 5m             | 20m           | No Plug     |
| <b>150W, 6m strip</b> |                 |                |                |               |             |
| 0055/163319           | BR6015/90dg/10m | 150W           | 6m             | 10m           | No Plug     |
| 0055/163320           | BR6015/90dg/15m | 150W           | 6m             | 15m           | No Plug     |
| 0055/163321           | BR6015/90dg/20m | 150W           | 6m             | 20m           | No Plug     |
| <b>200W, 3m strip</b> |                 |                |                |               |             |
| 0092/001970           | BR3000/90dg/10m | 200W           | 3m             | 10m           | No Plug     |
| 0092/001971           | BR3000/90dg/15m | 200W           | 3m             | 15m           | No Plug     |
| 0092/001972           | BR3000/90dg/20m | 200W           | 3m             | 20m           | No Plug     |
| <b>200W, 4m strip</b> |                 |                |                |               |             |
| 0092/001973           | BR4000/90dg/10m | 200W           | 4m             | 10m           | No Plug     |
| 0092/001974           | BR4000/90dg/15m | 200W           | 4m             | 15m           | No Plug     |
| 0092/001975           | BR4000/90dg/20m | 200W           | 4m             | 20m           | No Plug     |
| <b>200W, 5m strip</b> |                 |                |                |               |             |
| 0092/001976           | BR5000/90dg/10m | 200W           | 5m             | 10m           | No Plug     |
| 0092/001977           | BR5000/90dg/15m | 200W           | 5m             | 15m           | No Plug     |
| 0092/001978           | BR5000/90dg/20m | 200W           | 5m             | 20m           | No Plug     |
| <b>200W, 6m strip</b> |                 |                |                |               |             |
| 0092/001979           | BR6000/90dg/10m | 200W           | 6m             | 10m           | No Plug     |
| 0092/001980           | BR6000/90dg/15m | 200W           | 6m             | 15m           | No Plug     |
| 0092/001981           | BR6000/90dg/20m | 200W           | 6m             | 20m           | No Plug     |

### SAN Wrap Round Clips for 90° strips

| Cat No      | SAN Part No  | Watts Rating/m  | Strip Length/m |
|-------------|--------------|-----------------|----------------|
| 0092/001990 | I-801-001030 | For UIC60 rails | -              |

90° Non-Insulated Heater Strip



## HEATER STRIPS - 90° BEND INSULATED

### SAN Insulated 110v Constant Wattage Point Heater Strips with 90° bend

| Cat No                | SAN Part No        | Watts Rating/m | Strip Length/m | Lead length/m | Plug Fitted |
|-----------------------|--------------------|----------------|----------------|---------------|-------------|
| <b>150W, 3m strip</b> |                    |                |                |               |             |
| 0055/163342           | BR3015INS/90dg/10m | 150W           | 3m             | 10m           | No Plug     |
| 0055/163343           | BR3015INS/90dg/15m | 150W           | 3m             | 15m           | No Plug     |
| 0055/163344           | BR3015INS/90dg/20m | 150W           | 3m             | 20m           | No Plug     |
| <b>150W, 4m strip</b> |                    |                |                |               |             |
| 0055/163345           | BR4015INS/90dg/10m | 150W           | 4m             | 10m           | No Plug     |
| 0055/163346           | BR4015INS/90dg/15m | 150W           | 4m             | 15m           | No Plug     |
| 0055/163347           | BR4015INS/90dg/20m | 150W           | 4m             | 20m           | No Plug     |
| <b>150W, 5m strip</b> |                    |                |                |               |             |
| 0055/163348           | BR5015INS/90dg/10m | 150W           | 5m             | 10m           | No Plug     |
| 0055/163349           | BR5015INS/90dg/15m | 150W           | 5m             | 15m           | No Plug     |
| 0055/163350           | BR5015INS/90dg/20m | 150W           | 5m             | 20m           | No Plug     |
| <b>150W, 6m strip</b> |                    |                |                |               |             |
| 0055/163351           | BR6015INS/90dg/10m | 150W           | 6m             | 10m           | No Plug     |
| 0055/163352           | BR6015INS/90dg/15m | 150W           | 6m             | 15m           | No Plug     |
| 0055/163353           | BR6015INS/90dg/20m | 150W           | 6m             | 20m           | No Plug     |
| <b>200W, 3m strip</b> |                    |                |                |               |             |
| 0055/163226           | BR3 INS/90dg/10m   | 200W           | 3m             | 10m           | No Plug     |
| 0055/163227           | BR3 INS/90dg/15m   | 200W           | 3m             | 15m           | No Plug     |
| 0055/163228           | BR3 INS/90dg/20m   | 200W           | 3m             | 20m           | No Plug     |
| <b>200W, 4m strip</b> |                    |                |                |               |             |
| 0055/163229           | BR4 INS/90dg/10m   | 200W           | 4m             | 10m           | No Plug     |
| 0055/163230           | BR4 INS/90dg/15m   | 200W           | 4m             | 15m           | No Plug     |
| 0055/163231           | BR4 INS/90dg/20m   | 200W           | 4m             | 20m           | No Plug     |
| <b>200W, 5m strip</b> |                    |                |                |               |             |
| 0055/163232           | BR5 INS/90dg/10m   | 200W           | 5m             | 10m           | No Plug     |
| 0055/163233           | BR5 INS/90dg/15m   | 200W           | 5m             | 15m           | No Plug     |
| 0055/163234           | BR5 INS/90dg/20m   | 200W           | 5m             | 20m           | No Plug     |
| <b>200W, 6m strip</b> |                    |                |                |               |             |
| 0055/163235           | BR6 INS/90dg/10m   | 200W           | 6m             | 10m           | No Plug     |
| 0055/163236           | BR6 INS/90dg/15m   | 200W           | 6m             | 15m           | No Plug     |
| 0055/163237           | BR6 INS/90dg/20m   | 200W           | 6m             | 20m           | No Plug     |

90° Insulated Heater Strip



## HEATER STRIPS

### SAN 110v Constant Wattage Points Heater Cartridges (for use on Clamp Locks)

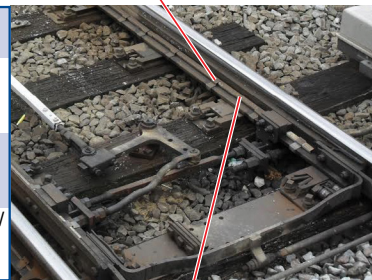
| Cat No      | SAN Part No   | Watts Rating/m | Strip Length/m | Lead length/m | Plug Fitted |
|-------------|---------------|----------------|----------------|---------------|-------------|
| 0055/020043 | BR844362      | 200W           | 0.158m         | 1.5m          | Rubber Plug |
| 0055/020044 | BR844364      | 200W           | 0.95m          | 1.5m          | Rubber Plug |
| 0055/163223 | BR844362/10m  | 200W           | 0.158          | 10m           | No Plug     |
| 0055/163224 | BR844362/15m  | 200W           | 0.158          | 15m           | No Plug     |
| 0055/162301 | BR844362/20m  | 200W           | 0.158          | 20m           | No Plug     |
| 0055/163225 | BR844362/30m  | 200W           | 0.158          | 30m           | No Plug     |
| 0055/020049 | BR844362/3.5m | 200W           | 0.158          | 3.5m          | Rubber Plug |



### Heatshields and Associated Clips

In order to improve the effectiveness of Heater Strips, Heatshield and Clips are now available. If using the clips, the normal range of retaining clips would not be used. 0055/163261

| Cat No      | Description  |
|-------------|--|
| 0055/163265 | Proctor Point Heat Retainer Complete With Spaceloft Insert In 1 Metre Lengths  |
| 0055/163261 | Strip Heater Securing Clip, For BS110a / BS113a / CEN56E1 / CEN60E2 / (11-13mm) Rail Sections. RHC001A. (For Use With 0055/163265) |
| 0055/163263 | Strip Heater Securing Clip, For CEN54E1A1/UIC54B/CEN60E1A1/UIC60B (20-22MM) Rail Sections. RHC003A. (For Use With 0055/163265)     |



0055/163265

### Pad Heaters

Under points heating pads are 110 volt, 100 watt and are placed underneath the slide chairs of the points. This minimises or prevents the build up of snow or the adverse effects of frost and ice.

| Cat No      | Description              |
|-------------|--------------------------|
| 0055/026981 | Heater Point Type A      |
| 0055/026982 | Heater Underchair Type B |
| 0055/026983 | Heater Point Type C      |
| 0055/026984 | Heater Point Type D      |



Network Rail has deemed pad heating as maintenance only, but the items remain readily available for other railway operators.

## POINTS HEATING Clip Only Kits using BritClips - Heater Strips not included

### I 131b FB Switch & Stock Rail - Solid Chair Jaw Blocks

| Catalogue Number        | Kit Contents                               |
|-------------------------|--|
| K050/555805 AV Switch   | RHC-001 x 22 - RHC-007 x 22 - RHC-004 x 4  |
| K050/555806 BV Switch   | RHC-001 x 28 - RHC-007 x 28 - RHC-004 x 4  |
| K050/555807 CV Switch   | RHC-001 x 28 - RHC-007 x 28 - RHC-004 x 4  |
| K050/555808 DV Switch   | RHC-001 x 32 - RHC-007 x 32 - RHC-004 x 4  |
| K050/555809 EV Switch   | RHC-001 x 44 - RHC-007 x 44 - RHC-004 x 8  |
| K050/555810 FV Switch   | RHC-001 x 56 - RHC-007 x 56 - RHC-004 x 8  |
| K050/555811 SGVS Switch | RHC-001 x 64 - RHC-007 x 64 - RHC-004 x 8  |
| K050/555812 GV Switch   | RHC-001 x 78 - RHC-007 x 78 - RHC-004 x 12 |
| K050/555813 HV Switch   | RHC-001 x 96 - RHC-007 x 96 - RHC-004 x 12 |

The above list of kits are clips only for use where the points are I 131b flat bottom construction and where SOLID chair jaw blocks are in use in the point layout.

### I 131b FB Switch & Stock Rail - Slotted or no Chair Jaw Blocks

| Catalogue Number       | Kit Contents                 |
|------------------------|------------------------------|
| K050/555815 AV Switch  | RHC-001 x 44 - RHC-004 x 4   |
| K050/555816 BV Switch  | RHC-001 x 56 - RHC-004 x 4   |
| K050/555817 CV Switch  | RHC-001 x 56 - RHC-004 x 4   |
| K050/555818 DV Switch  | RHC-001 x 64 - RHC-004 x 4   |
| K050/555819 EV Switch  | RHC-001 x 88 - RHC-004 x 8   |
| K050/555820 FV Switch  | RHC-001 x 112 - RHC-004 x 8  |
| K050/555821 SGV Switch | RHC-001 x 128 - RHC-004 x 8  |
| K050/555822 GV Switch  | RHC-001 x 156 - RHC-004 x 12 |
| K050/555823 HV Switch  | RHC-001 x 192 - RHC-004 x 12 |

The above list of kits are clips only for use where the points are I 131b flat bottom construction and where SLOTTED or NO chair blocks are fitted.

### 95R Bullhead Switch & Stock Rails

| Catalogue Number      | Kit Contents  |
|-----------------------|---|
| K050/555825 A Switch  | RHC-015 x 22 - RHC-016 x 22 - RHC-017 x 4 - RHC-025 x 2 |
| K050/555826 B Switch  | RHC-015 x 28 - RHC-016 x 28 - RHC-017 x 4 - RHC-025 x 2 |
| K050/555827 C Switch  | RHC-015 x 28 - RHC-016 x 28 - RHC-017 x 4 - RHC-025 x 2 |
| K050/555828 D Switch  | RHC-015 x 32 - RHC-016 x 32 - RHC-017 x 4 - RHC-025 x 2 |
| K050/555829 E Switch  | RHC-015 x 44 - RHC-016 x 44 - RHC-017 x 4 - RHC-025 x 2 |
| K050/555830 F Switch  | RHC-015 x 56 - RHC-016 x 56 - RHC-017 x 4 - RHC-025 x 2 |
| K050/555831 SG Switch | RHC-015 x 64 - RHC-016 x 64 - RHC-017 x 4 - RHC-025 x 2 |
| K050/555832 G Switch  | RHC-015 x 78 - RHC-016 x 78 - RHC-017 x 6 - RHC-025 x 2 |
| K050/555833 H Switch  | RHC-015 x 96 - RHC-016 x 96 - RHC-017 x 6 - RHC-025 x 2 |

The above list of kits are clips only for use where the points are 95lb bull head construction.

### RT60 Switch & Stock Rail with Concrete Bearers

| Catalogue Number      | Kit Contents  |
|-----------------------|---|
| K050/555835 C Switch  | RHC-001 x 34 - RHC-004 x 2 - RHC-013 x 34 - RHC-014 x 2     |
| K050/555836 D Switch  | RHC-001 x 44 - RHC-004 x 4 - RHC-013 x 44 - RHC-014 x 4     |
| K050/555837 E Switch  | RHC-001 x 56 - RHC-004 x 5 - RHC-013 x 56 - RHC-014 x 4     |
| K050/555838 F Switch  | RHC-001 x 68 - RHC-004 x 4 - RHC-013 x 68 - RHC-014 x 4     |
| K050/555839 SG Switch | RHC-001 x 78 - RHC-004 x 6 - RHC-013 x 78 - RHC-014 x 6     |
| K050/555840 G Switch  | RHC-001 x 90 - RHC-004 x 6 - RHC-013 x 90 - RHC-014 x 6     |
| K050/555841 H Switch  | RHC-001 x 124 - RHC-004 x 8 - RHC-013 x 124 - RHC-014 x 8   |
| K050/555842 J Switch  | RHC-001 x 158 - RHC-004 x 10 - RHC-013 x 158 - RHC-014 x 10 |



## POINTS HEATING BritClip Rail Clips Guide

### Clip Selection Guide

| Ref No   | Cat No      | To Fit Rail Type |       |       |        |        |       |        | Bullhead | Where used                   |
|----------|-------------|------------------|-------|-------|--------|--------|-------|--------|----------|------------------------------|
|          |             | BS110            | BS113 | UIC54 | UIC54A | UIC54B | UIC60 | UIC60B |          |                              |
| *RHC-001 | 0055/009155 | •                | •     | •     |        |        |       | •      |          | Bottom Fix                   |
| *RHC-002 | 0055/009156 |                  |       |       | •      |        |       |        |          | Bottom Fix                   |
| *RHC-003 | 0055/009157 |                  |       |       |        | •      |       |        |          | Bottom Fix                   |
| *RHC-004 | 0055/009158 | •                | •     | •     |        |        |       | •      |          | Barrel Holder                |
| *RHC-005 | 0055/009159 |                  |       |       | •      |        |       |        |          | Barrel Holder                |
| *RHC-006 | 0055/009160 |                  |       |       |        | •      |       |        |          | Barrel Holder                |
| *RHC-007 | 0055/009161 | •                | •     | •     |        |        |       |        |          | Top Fix                      |
| *RHC-013 | 0055/009166 |                  |       |       |        |        |       | •      |          | Top Fix                      |
| *RHC-014 | 0055/009167 |                  |       |       |        |        |       | •      |          | Barrel Holder                |
| *RHC-015 | 0055/009168 |                  |       |       |        |        |       |        | •        | Bottom Fix                   |
| *RHC-016 | 0055/009169 |                  |       |       |        |        |       |        | •        | Top Fix                      |
| *RHC-017 | 0055/009172 |                  |       |       |        |        |       |        | •        | Barrel Holder                |
| *RHC-019 | 0055/009175 | •                | •     | •     |        |        |       | •      |          | Temperature Sensor           |
| *RHC-025 | 0055/009179 |                  |       |       |        |        |       |        | •        | Toe End Knock on Heater Clip |
| RHC-030  |             |                  |       |       |        |        |       |        | •        | Temperature Sensor           |

• Denotes suitability of clip to rail type

### Clip Quantities for UIC60 Rail

| Switch Type          | RT60 Switches with concrete bearers           |             |  |             | RT60 Switches with hollow bearers          |             |
|----------------------|---|-------------|--|-------------|--|-------------|
|                      | Number of clips required for UIC60 Stock Rail |             | Number of clips required for UIC60 Switch Rail |             | Number of clips required                   |             |
|                      | 0055/009155                                   | 0055/009158 | 0055/009166                                    | 0055/009167 | 0055/009155                                | 0055/009166 |
| PADS Cat No          | RHC-001                                       | RHC-004     | RHC-013  | RHC-014     | RHC-001                                    | RHC-013     |
| Britclips Product No |   |             |  |             |  |             |
| RT60C Switch         | 34  | 2           | 34   | 2           | 42   | 38          |
| RT60D Switch         | 44  | 4           | 44   | 4           | 45   | 42          |
| RT60E Switch         | 56  | 4           | 56   | 4           | 57   | 54          |
| RT60F Switch         | 68  | 4           | 68   | 4           | 69   | 55          |
| RT60SG Switch        | 78  | 6           | 78   | 6           | 84   | 81          |
| RT60G Switch         | 90  | 6           | 90   | 6           | 102  | 98          |
| RT60H Switch         | 124   | 8           | 124  | 8           | 132  | 128         |
| RT60J Switch         | 158   | 10          | 158  | 10          | Providing barrels located in hollow bearer |             |

These tables are for guidance only and should not be accepted as any part of a line standard. Notes: As a rough guide, there should be 17 clips per 4 metre strip etc.

Where the strip heater barrel is affixed to the rail, then one barrel clip per strip will be required. Where the barrel of the strip heater is in a hollow bearer, then no barrel clip is required. Where temperature probes are attached to the rail, a 0055/009175, RHC-019 clip will be required for EACH probe.

### Clip Quantities for Switch Type

| Switch Type          | 113A Flat Bottom with solid jaw blocks No of clips required for Stock and Switch rails |             |               | 95R Bullhead Switches No of clips required for Stock and Switch rail |             |               |             |
|----------------------|--|-------------|---------------|--|-------------|---------------|-------------|
|                      | 0055/009155  | 0055/009161 | 0055/009158   | 0055/009168  | 0055/009169 | 0055/009172   | 0055/009179 |
| PADS Cat No          | RHC-001  | RHC-007     | RHC-004       | RHC-015  | RHC-016     | RHC-017       | RHC-025     |
| Britclips Product No | Bottom Fit   | Under Head  | Barrel Holder | Bottom Fit   | Under Head  | Barrel Holder | Toe End     |
| AV Switch            | 22   | 22          | 4             | 22   | 22          | 4             |             |
| BV Switch            | 28   | 28          | 4             | 28   | 28          | 4             |             |
| CV Switch            | 28   | 28          | 4             | 28   | 28          | 4             |             |
| DV Switch            | 32   | 32          | 4             | 32   | 32          | 4             |             |
| EV Switch            | 44   | 44          | 8             | 44   | 44          | 4             |             |
| FV Switch            | 56   | 56          | 8             | 56   | 56          | 4             |             |
| SGV Switch           | 64   | 64          | 8             | 64   | 64          | 4             |             |
| GV Switch            | 78   | 78          | 12            | 78   | 78          | 6             |             |
| HV Switch            | 96   | 96          | 12            | 96   | 96          | 6             |             |

Notes: Where the strip heater barrel is affixed to the rail, then one barrel clip per strip will be required. Where temperature probes are attached to the rail, a 0055/009175, RHC-019 clip will be required for each probe fitted to 113A rail. (For fitting of temperature probes on 95R bullhead rail, a RHC-030 clip should be used) Toe end clips may be required on Bullhead rail switch rails.